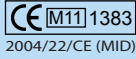


mod. **GMB-RP**
multi jet - protected rolls



MID APPROVED
RANGE 200

Mod. GMB-RP

Getto multiplo, quadrante bagnato a rulli protetti. Con dispositivo di compensazione della pressione tra interno ed esterno della capsula. Trasmissione dalla turbina all'orologeria completamente meccanica. Realizzati nella versione per acqua fredda 30°C, nei calibri da DN 15-50 mm (1/2"-2"). Coperchio girevole orientabile a 360°. Garanzia di lunga durata ed elevata precisione. Contatore omologato a norme **MID R200H - R40V**.

Mod. GMB-RP

Multi jet wet dial with protected rolls. With special device for pressure compensation between inside and outside of the capsule. The transmission from the turbine to the mechanism is fully mechanical. Manufactured for cold water 30°C in the sizes from DN 15 to DN 50 mm (1/2" to 2"). Rotating lid at 360°. Long durability and high accuracy is guaranteed. Approved according to **MID standards R200H - R40V**.

Mod. GMB-RP

Chorro múltiple, esfera húmeda con rodillos protegidos. Con dispositivo de compensación de la presión entre la parte interna y externa de la capsula. Transmisión completamente mecánica desde la turbina a la relojería. Realizados en la versión para el agua fría 30°C, en los calibres de DN 15-50 mm (1/2" - 2"). Tapa giratoria orientable 360°. Garantía de larga duración y alta precisión. Contador homologado por las normas **MID R200H - R40V**.

Mod. GMB-RP

Jets multiples, cadran noyé à rouleaux protégés. Avec dispositif de compensation de la pression entre l'intérieur du compartiment étanche. Transmission de la turbine à l'horlogerie de type entièrement mécanique. Réalisés dans la version pour eau froide 30°C dans les calibres DN 15-50 mm (1/2" - 2"). Couvercle pivotant orientable à 360°. Garantie de longue durée et haute précision. Approuvé selon les normes de **MID R200H - R40V**.

Mod. GMB-RP

Mehrstrahlzähler, Nassläufer mit geschützten Zählwerksrollen. Mit Druckkompensation zwischen Innen- und Außendruck der Messkapsel. Vollständig mechanische Übertragung der Drehbewegung von Flügelrad auf Zählwerk. Erzeugt in der Ausführung für Kaltwasser 30°C, Innendurchmesser von DN 15-50 mm (1/2" - 2"). Um 360° schwenkbarer Deckel. Garantie für lange Lebensdauer und hohe Messgenauigkeit. Zugelassener Zähler für **MID Standards R200H - R40V**.

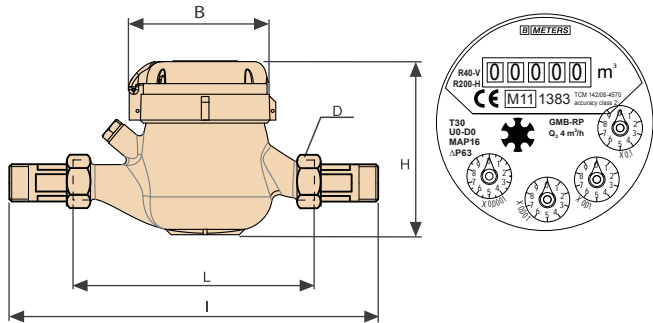
Мод. GMB-RP

Многоструйный, мокроходный счётчик холодной (30°C) воды, с защищёнными роликами. С устройством выравнивания давления между внутренней и внешней частями капсулы. Трансмиссия от турбины до часового механизма - полностью механическая. С диаметром условного прохода с 15 до 50 мм (½ ÷ 2"). Вращаемая на 360° крышка. Гарантия долговечности и высокой точности. Счётчик сертифицирован в соответствии с нормами **MID R200H - R40V**.

Caratteristiche tecniche - Technical features

Calibro Size	DN	mm in	15 1/2"	20 3/4"	25 1"	32 1 1/4"	40 1 1/2"	50 2"
Portata di sovraccarico Overload flow rate	Q ₄	m ³ /h	3,12	5	7,85	12,5	20	31,25
Portata permanente Permanent flow rate	Q ₃	m ³ /h	2,5	4	6,3	10	16	25
Portata di transizione Transitional flow rate	Q ₂	l/h	40	64	101	160	256	400
Portata minima Min flow rate	Q ₁	l/h	25	40	63	100	160	250
Portata di transizione Transitional flow rate	Q ₂	l/h	25	40	63	100	160	250
Portata minima Min flow rate	Q ₁	l/h	16	25	39	63	100	156
Sensibilità Sensibility	Q _L	l/h	6	6	10	10	20	20
Letture minima Min. reading	l		0,05	0,05	0,05	0,05	0,05	0,05
Letture massima Max reading	m ³		100.000	100.000	100.000	100.000	1.000.000	1.000.000
Pressione max di esercizio Max working pressure	MAP	bar	16	16	16	16	16	16

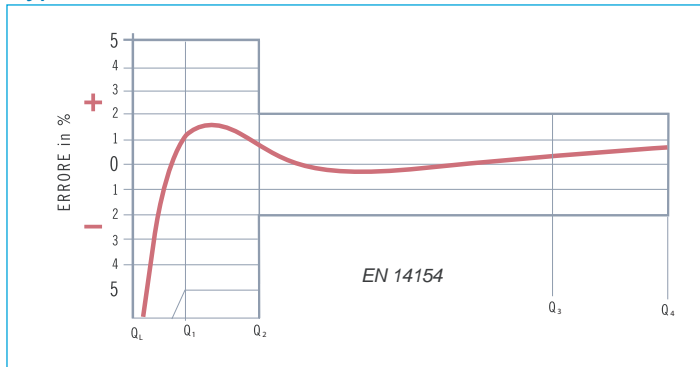
Dimensioni e pesi - Dimensions and weights



Calibro Size	mm in	15 1/2"	20 3/4"	25 1"	32 1 1/4"	40 1 1/2"	50*
L	mm	145-165-190	190	260	260	300	300
I	mm	225-245-270	290	360	380	440	460
H	mm	109	111	117	117	153	172
B	mm	100	100	104	104	126	160
D	in	3/4"	1"	1 1/4"	1 1/2"	2"	2 1/2"
Pesi Weights	Kg	1,35	1,45	2,04	2,11	4,58	7,25

* I contatori DN 50 possono essere forniti flangiati secondo UNI EN 1092-1:2007 PN 16
* The DN 50 meters can be supplied flanged according to UNI EN 1092-1:2007 PN 16.

Curva tipica degli errori dei contatori a turbina Typical error curve of turbine meters



Range 160H-40V Range 100H-40V

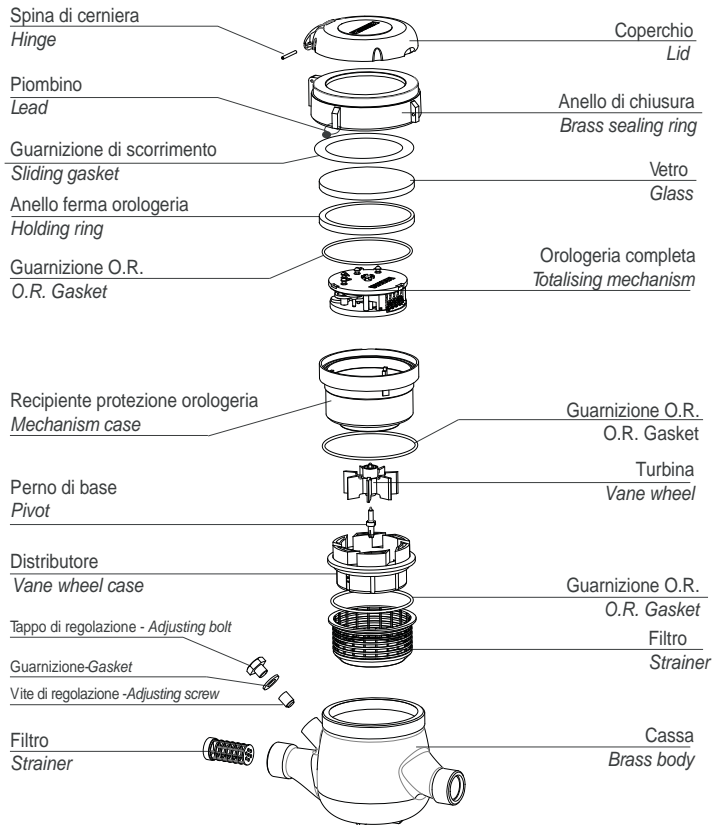
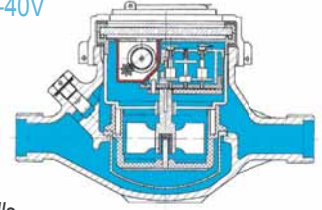
Acqua fredda 0° - 30°C
Cold water 0° - 30°C

Trascinamento meccanico
Mechanical transmission

Letture diretta a rulli numeratori
Immediate reading by numerical rolls

Quadrante bagnato
Wet dial

Predisposto per sensore a impulsi su richiesta (Modello GMB RP-P)
Pre-equipped with pulse emitter on request (Model GMB RP-P)



Curva delle perdite di carico dei contatori da DN 15 a 50 Head loss curve from DN 15 to 50 water meters

